

How to hang

WHAT'S INCLUDED



2x White plastic markers



Level



Strip of foam tape



2x 1.5" Nails



2x Screws

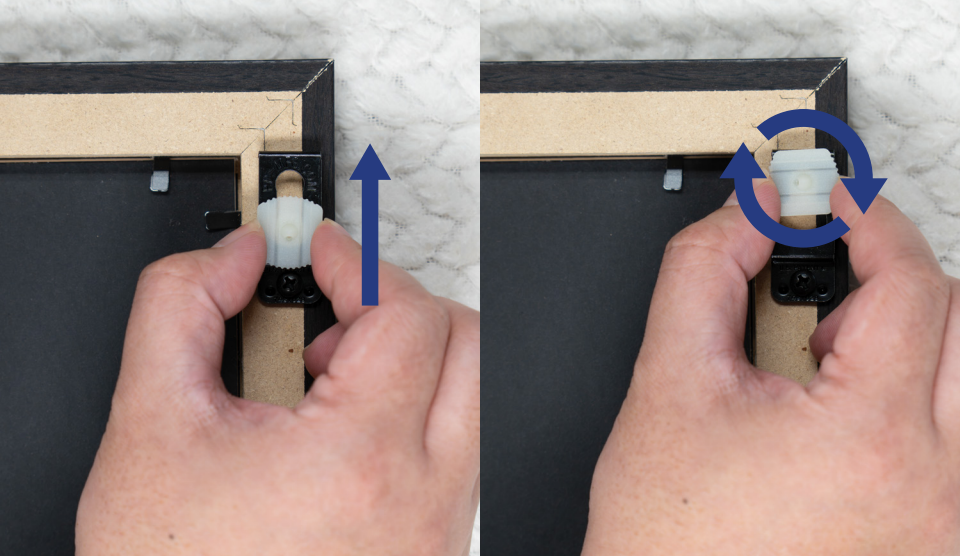
WHAT YOU'LL NEED



Hammer



Scissors



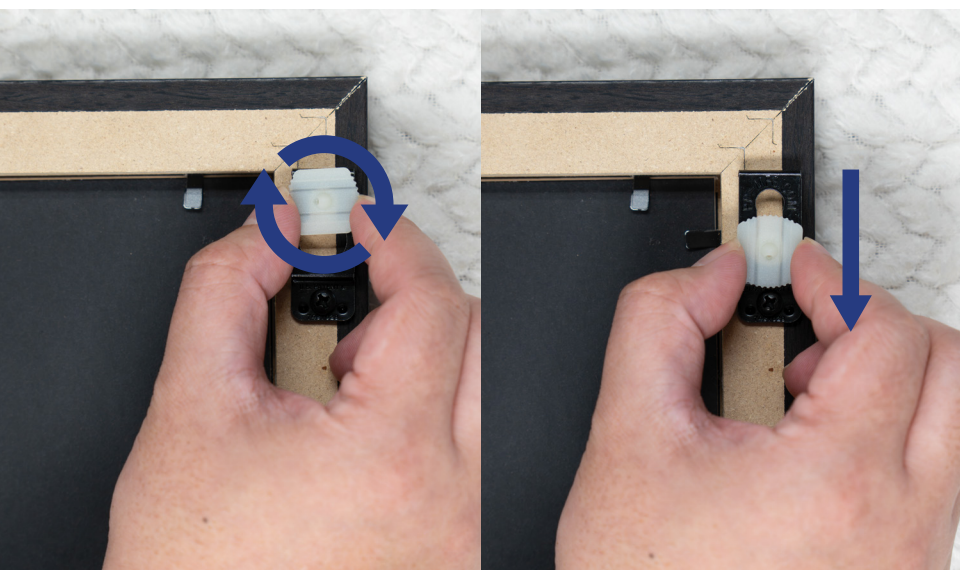
Insert markers as shown.
Rotate to 3 and 9 o'clock to lock.



Attach level to top of frame with foam tape. Position frame on wall, and level.



Press firmly into wall to make dimple marks.



Rotate markers to 12 and 6 o'clock
to unlock, and remove.



Align markers with wall dimples,
then gently nail into wall.



Line up brackets on frame with markers on wall.
Push in and pull down gently to secure frame.